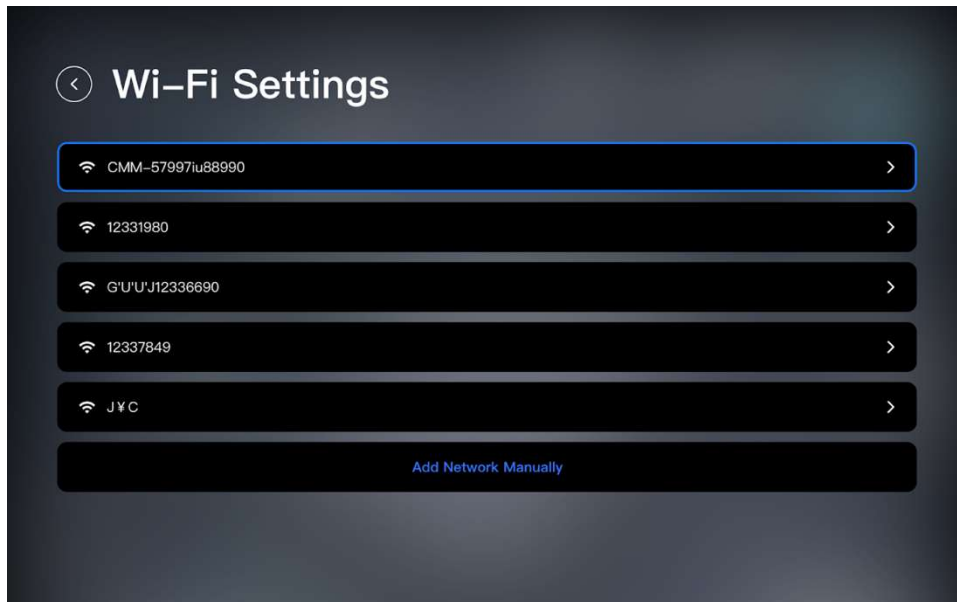




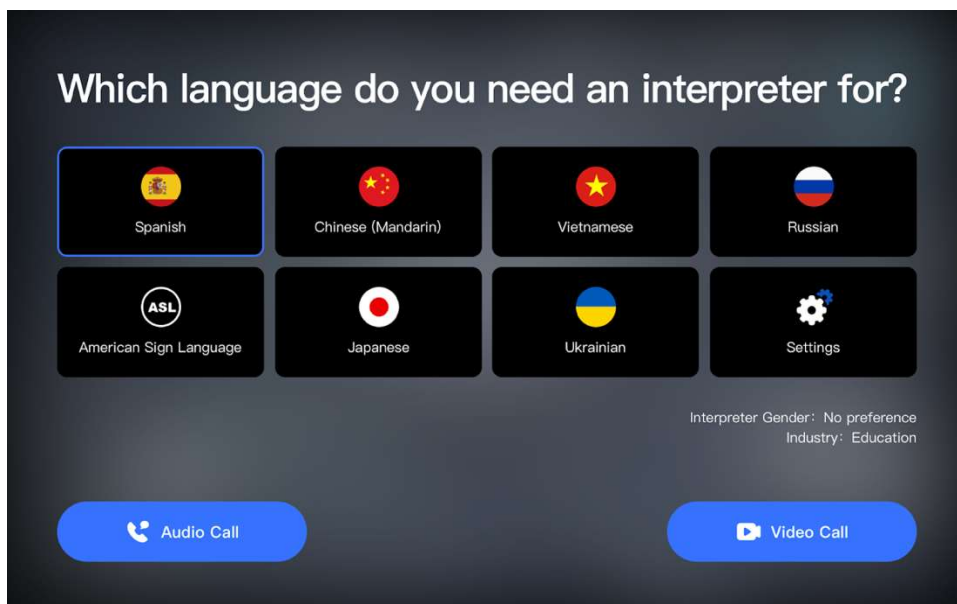
User Guide for Lingolet Interpreter Pro

Connect to an interpreter in a few simple steps:

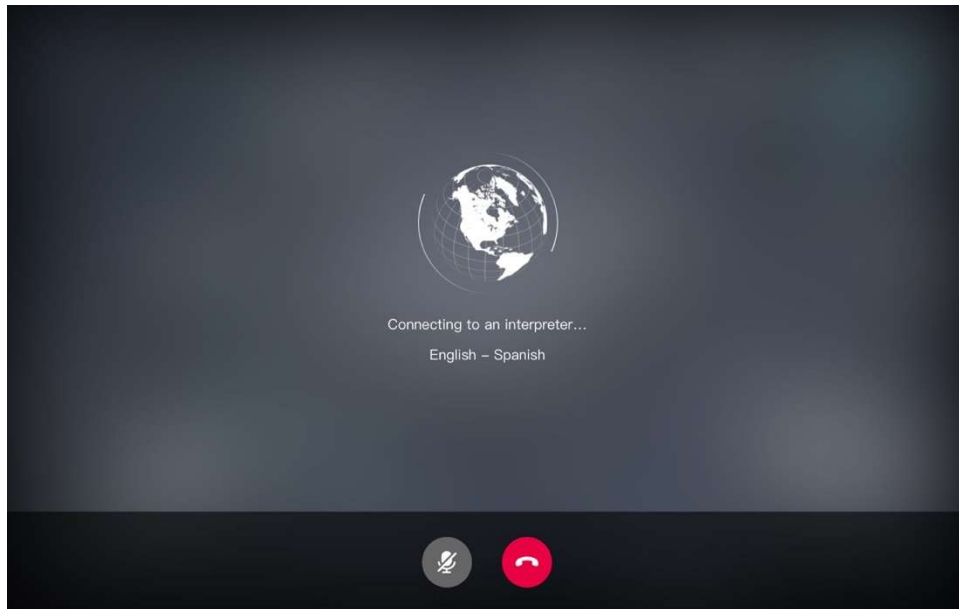
1. Power on the device and connect to wi-fi:



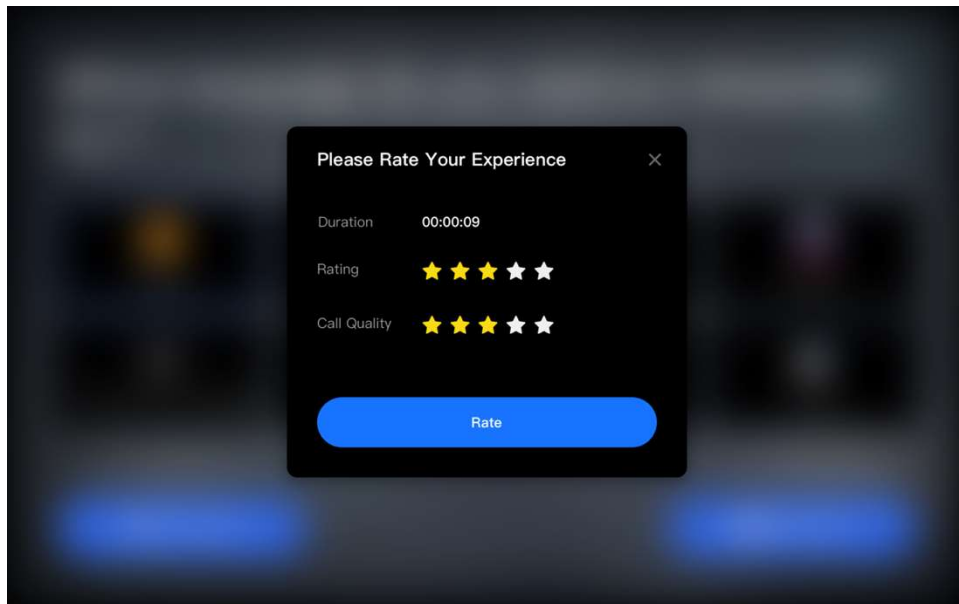
2. Select the languages on the home screen that you need interpreted:



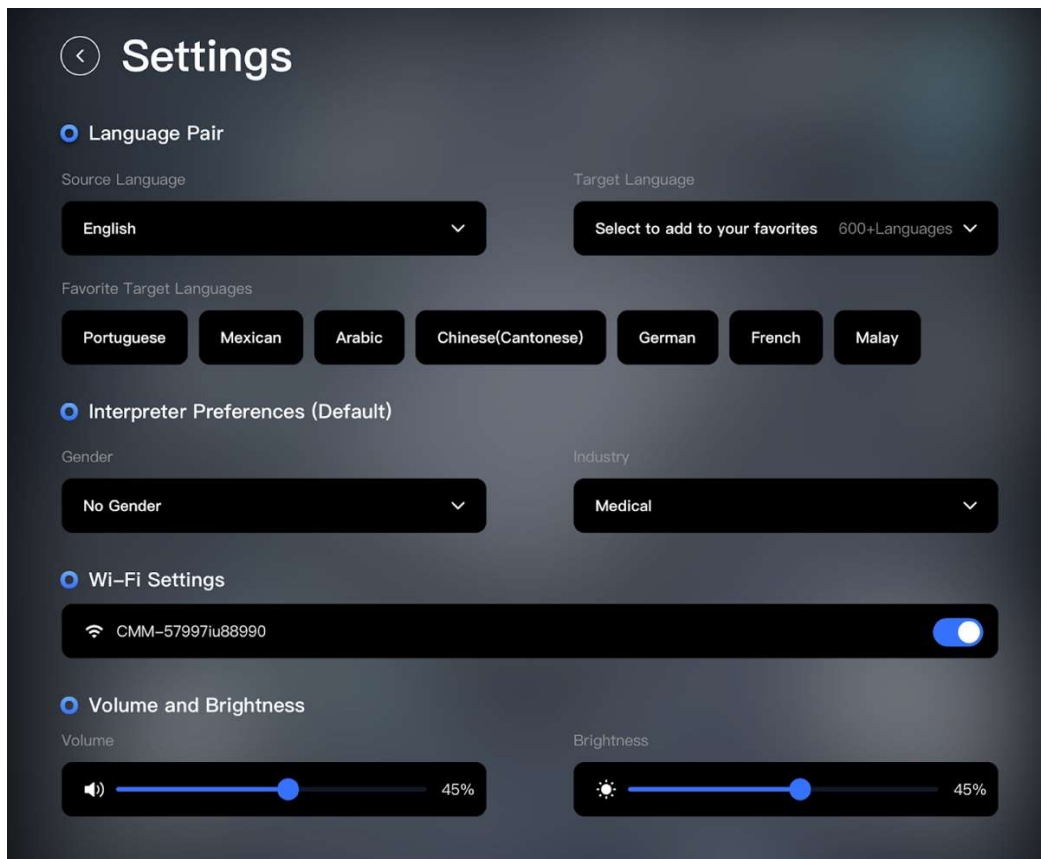
3. Click either **Audio Call** or **Video Call** to connect to an interpreter:



4. When you finish, rate the interpreter and call quality:



5. Click **Settings** to change the languages on the home screen, your industry, or gender of interpreters:



Add New Languages to the Home Screen

1. Click on the **Settings** button.
2. Click on the **Target Language** dropdown and select a new language.
3. The last language in the list under **Target Languages on Home Screen** will be removed and the new language will be added to the list.

Changing Industry or Gender Preference

1. Click on the **Settings** button.
2. Click on the **Gender** dropdown and select the interpreter's gender.
3. Click on the **Industry** dropdown and select your industry.

Contact Lingolet Support at support@lingolet.com or [Lingolet.com/support/](https://lingolet.com/support/)